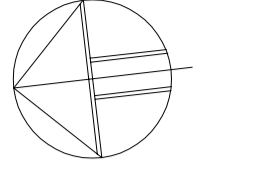


BLOCK - A

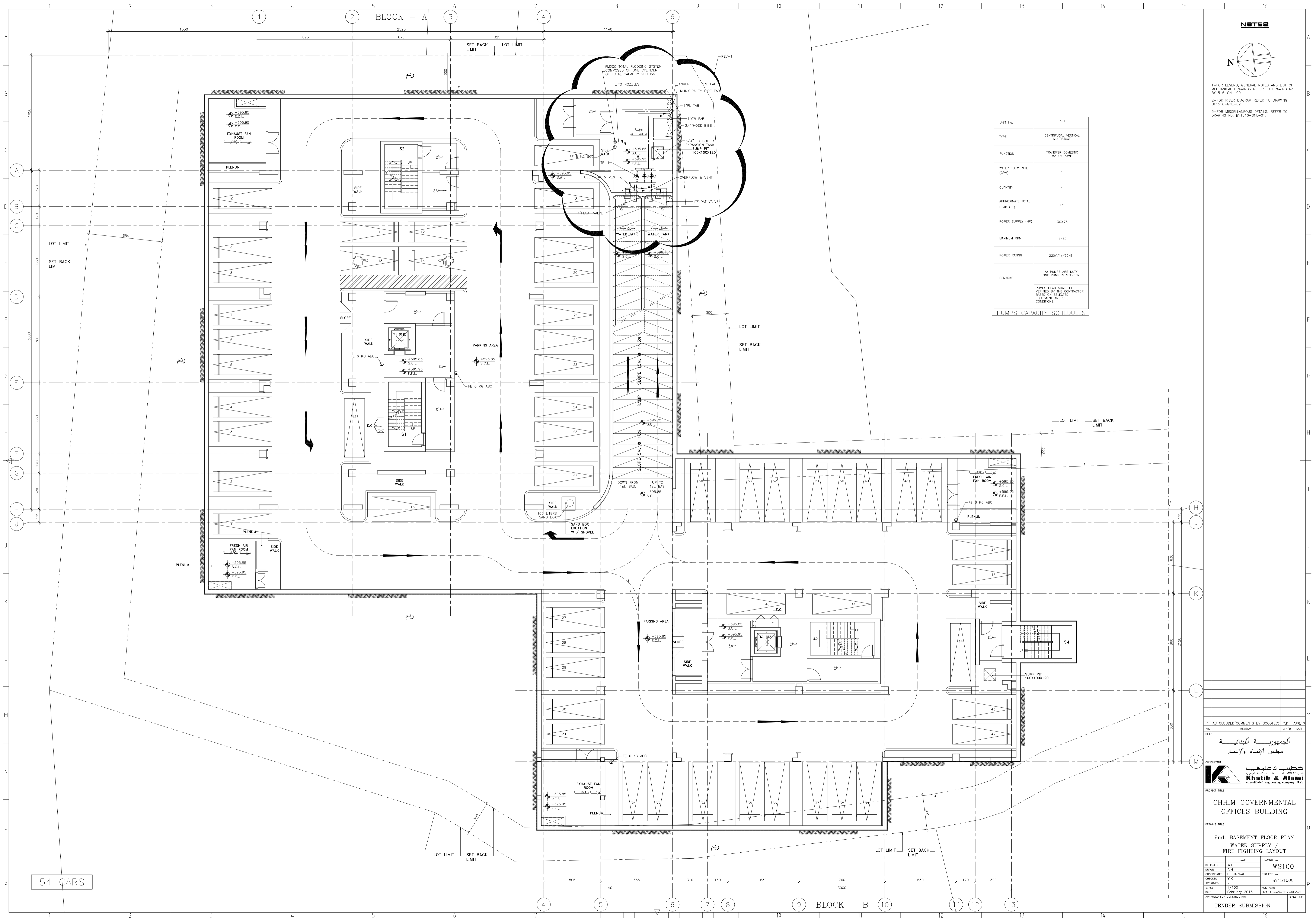
NOTES



- 1-FOR LEGEND, GENERAL NOTES AND LIST OF MECHANICAL DRAWINGS REFER TO DRAWING No. BY1516-GNL-00.
- 2-FOR RISER DIAGRAM REFER TO DRAWING BY1516-GNL-02.
- 3-FOR MISCELLANEOUS DETAILS, REFER TO DRAWING No. BY1516-GNL-01.

UNIT No.	TP-1
TYPE	CENTRIFUGAL VERTICAL MULTISTAGE
FUNCTION	TRANSFER DOMESTIC WATER PUMP
WATER FLOW RATE (GPM)	7
QUANTITY	3
APPROXIMATE TOTAL HEAD (FT)	130
POWER SUPPLY (HP)	340.75
MAXIMUM RPM	1450
POWER RATING	220V/14/50HZ
REMARKS	*3 PUMPS ARE DUTY, ONE PUMP IS STANDBY. PUMPS HEAD SHALL BE VERIFIED BY THE CONTRACTOR BASED ON SELECTED EQUIPMENT AND SITE CONDITIONS.

PUMPS CAPACITY SCHEDULES



54 CARS

DESIGNED	R.H.	DATE	17/1/2016
DRAWN	A.H.	PROJECT NO.	BY151600
CHECKED	Y.K.	FILE NAME	BY1516-RS-002-REV-1
APPROVED	Y.K.	DATE	February 2016
SCALE	1/100	APPROVED FOR CONSTRUCTION	

CONSULTANT
خطيب و علي
Khatib & Alami
 consolidated engineering company S.A.L.

PROJECT TITLE
CHHM GOVERNMENTAL OFFICES BUILDING

DRAWING TITLE
**2nd. BASEMENT FLOOR PLAN
 WATER SUPPLY /
 FIRE FIGHTING LAYOUT**

DRAWING NO.
WS100

TENDER SUBMISSION