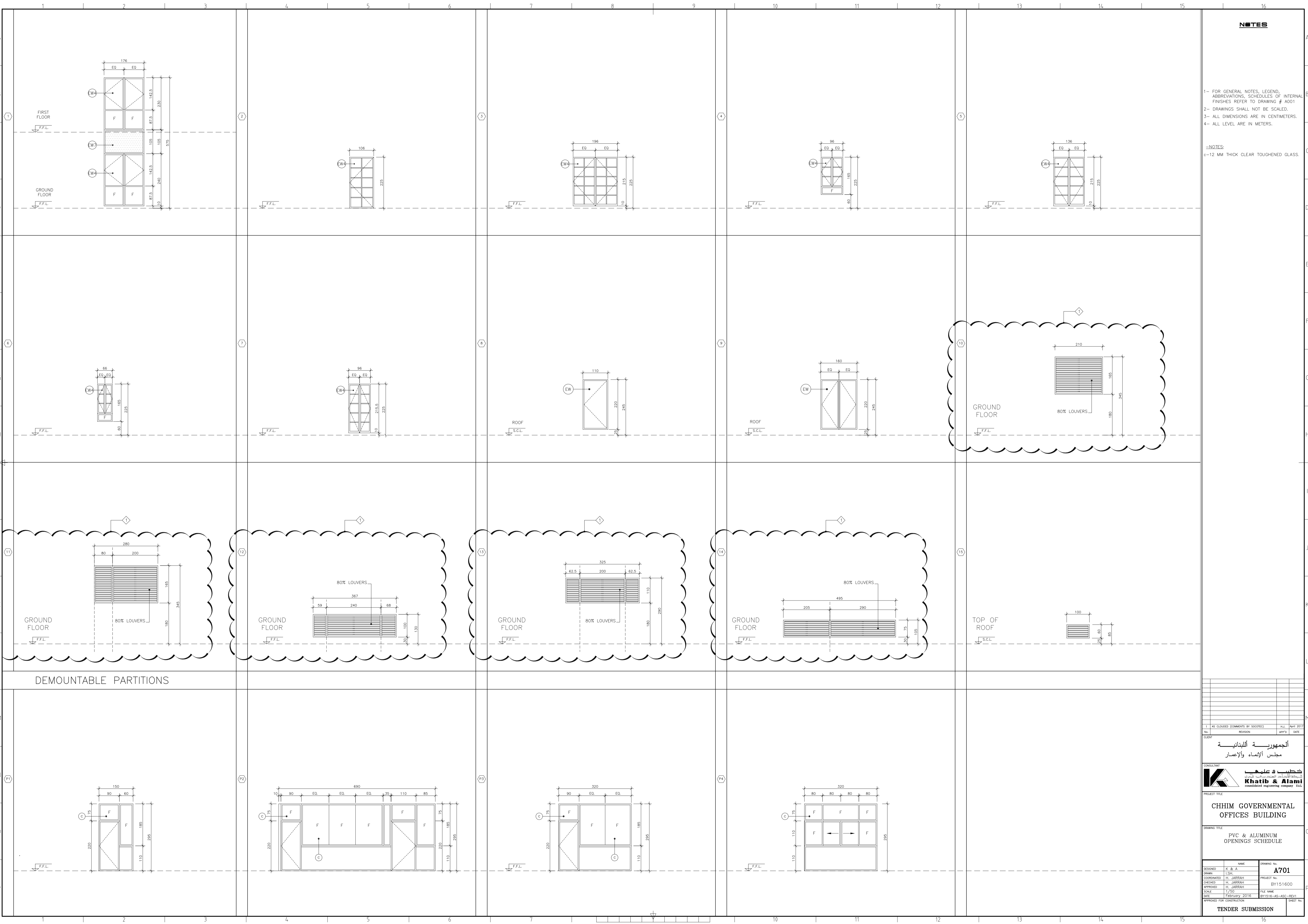


NOTES

- 1- FOR GENERAL NOTES, LEGEND, ABBREVIATIONS, SCHEDULES OF INTERNAL FINISHES REFER TO DRAWING # A001
- 2- DRAWINGS SHALL NOT BE SCALED.
- 3- ALL DIMENSIONS ARE IN CENTIMETERS.
- 4- ALL LEVEL ARE IN METERS.

=NOTES:
C-12 MM THICK CLEAR TOUGHENED GLASS.



NO.	REVISION	DATE
1	AS CLOUED (COMMENTS BY S00070)	14/04/2017

CLIENT: الجمهورية اللبنانية
مجلس الإنماء والإعمار

CONSULTANT: **خطيب وعلوي**
Khatib & Alami
civilized engineering company S.A.L.

PROJECT TITLE: **CHHIM GOVERNMENTAL OFFICES BUILDING**

DRAWING TITLE: **PVC & ALUMINUM OPENINGS SCHEDULE**

DESIGNED: K & A	DRAWING No: A701
DRAWN: L.S.H	PROJECT No: BY151600
COORDINATED: H. JARRAH	FILE NAME:
CHECKED: H. JARRAH	DATE: February 2016
APPROVED: H. JARRAH	BY: 1516-AS-ASC-REV1
SCALE: 1/20	SHEET No:

APPROVED FOR CONSTRUCTION

TENDER SUBMISSION