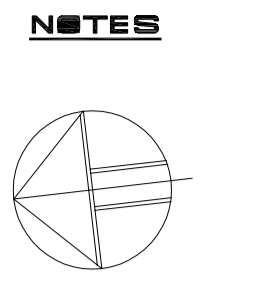
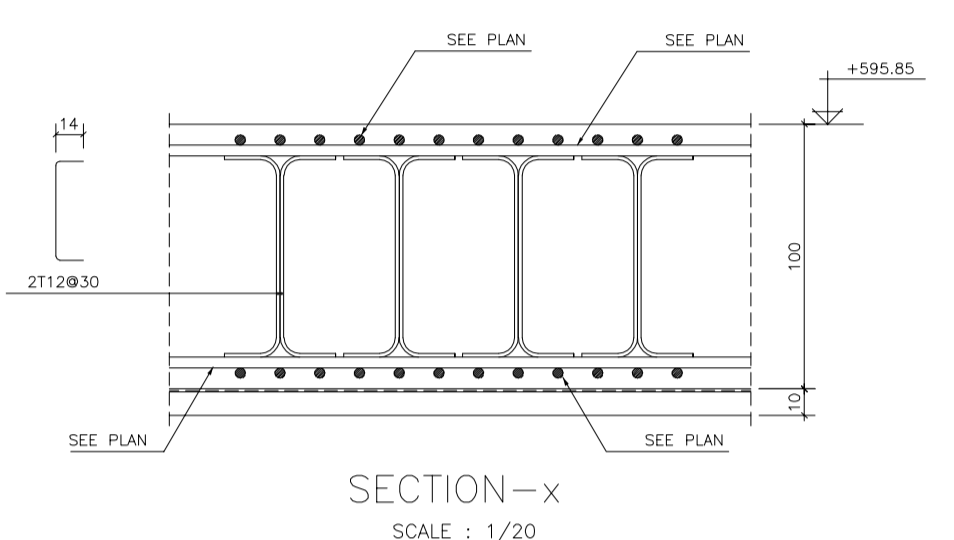
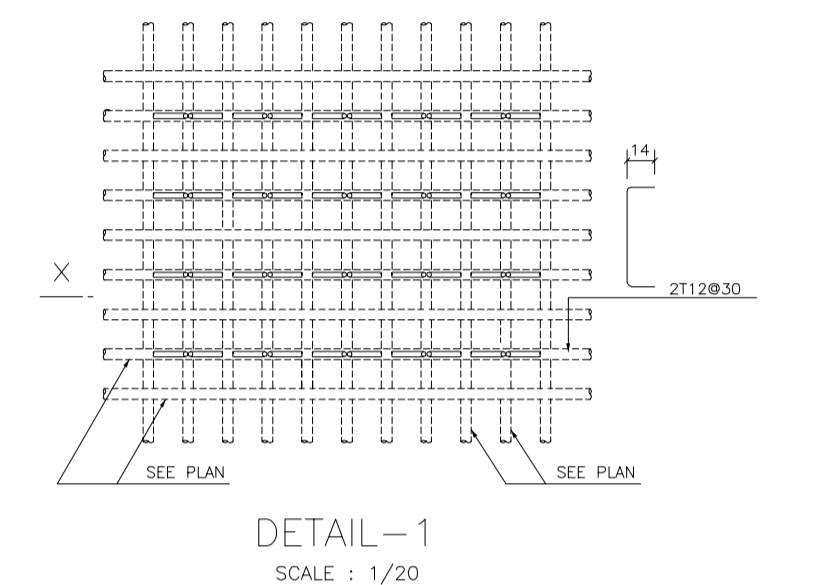
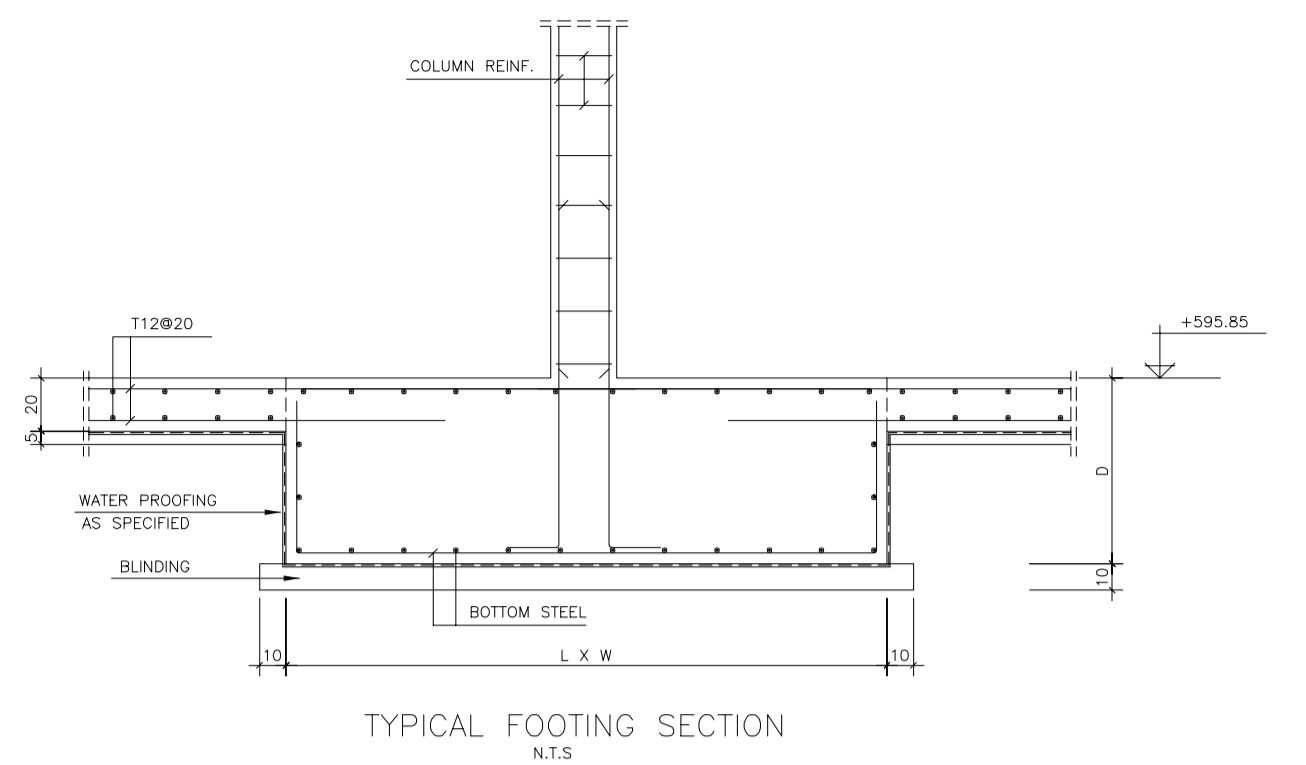


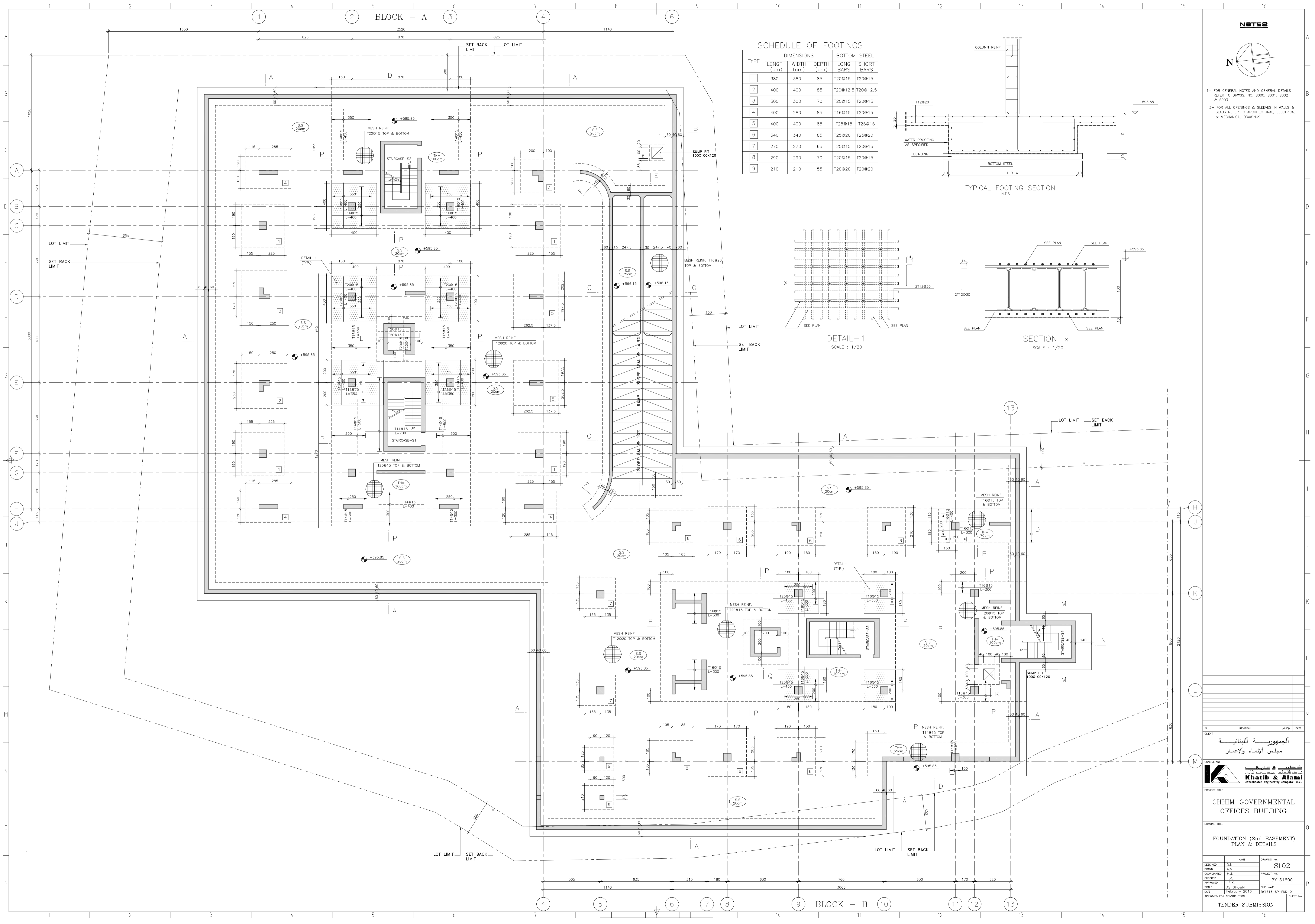
BLOCK - A

SCHEDULE OF FOOTINGS

TYPE	DIMENSIONS			BOTTOM STEEL	
	LENGTH (cm)	WIDTH (cm)	DEPTH (cm)	LONG BARS	SHORT BARS
1	380	380	85	T20@15	T20@15
2	400	400	85	T20@12.5	T20@12.5
3	300	300	70	T20@15	T20@15
4	400	280	85	T16@15	T20@15
5	400	400	85	T25@15	T25@15
6	340	340	85	T25@20	T25@20
7	270	270	65	T20@15	T20@15
8	290	290	70	T20@15	T20@15
9	210	210	55	T20@20	T20@20



- NOTES**
- 1- FOR GENERAL NOTES AND GENERAL DETAILS REFER TO DRWS. NO. S000, S001, S002 & S003.
  - 3- FOR ALL OPENINGS & SLEEVES IN WALLS & SLABS REFER TO ARCHITECTURAL, ELECTRICAL & MECHANICAL DRAWINGS.



NO.	REVISION	APP'D	DATE

CLIENT  
 الجمهورية اللبنانية  
 مجلس الإنماء والإعمار

CONSULTANT  
  
**Khatib & Alami**  
 consolidated engineering company S.A.L.

PROJECT TITLE  
**CHHIM GOVERNMENTAL OFFICES BUILDING**

DRAWING TITLE  
**FOUNDATION (2nd BASEMENT) PLAN & DETAILS**

DESIGNED	D.N.	DRAWING NO.	S102
DRAWN	A.M.	PROJECT NO.	BY151600
CHECKED	F.K.	FILE NAME	BY1516-SP-FND-01
DATE	FEBRUARY 2016	DATE	FEBRUARY 2016
APPROVED FOR CONSTRUCTION		SHEET NO.	

TENDER SUBMISSION