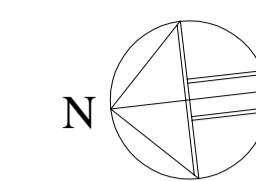
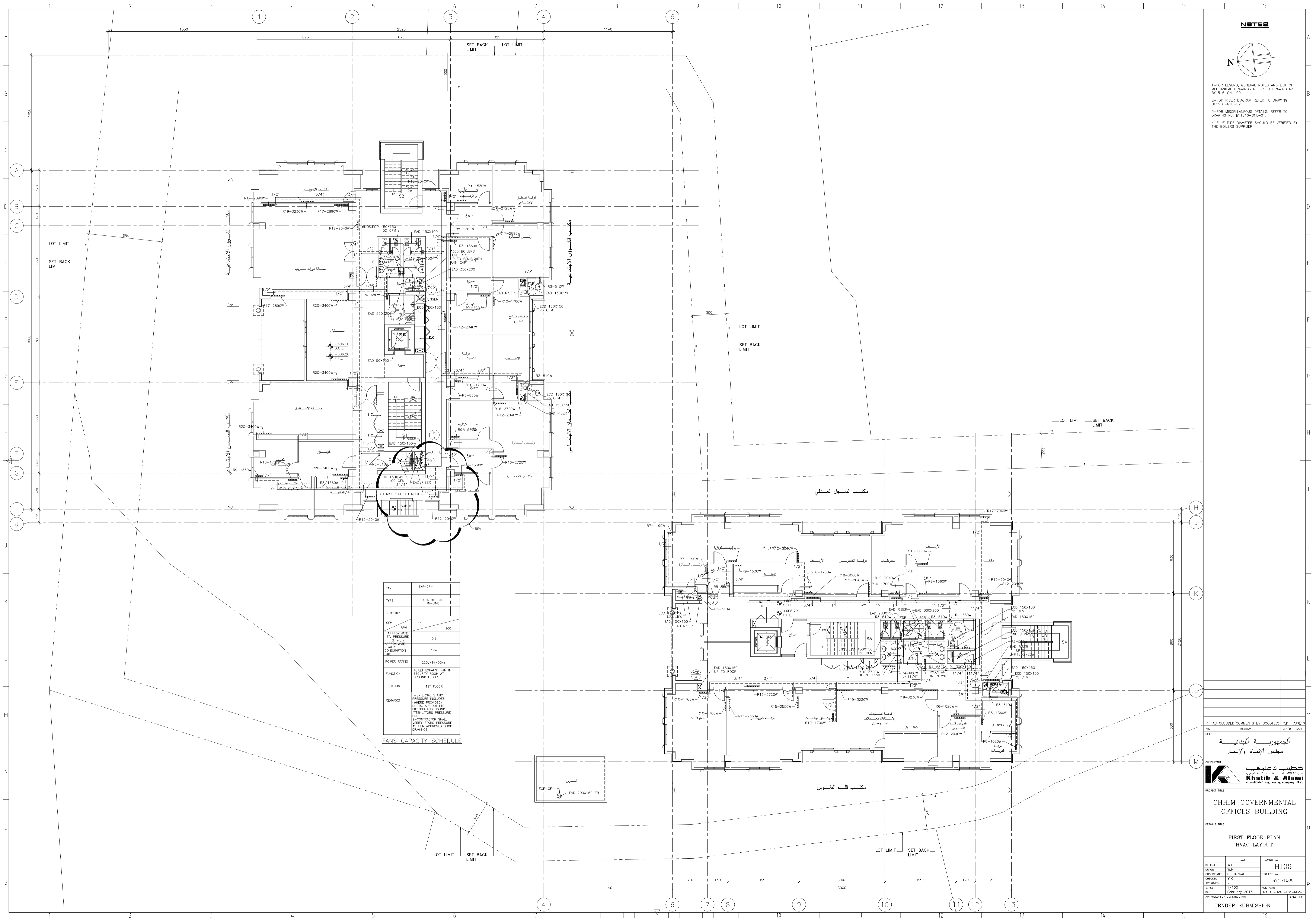


NOTES

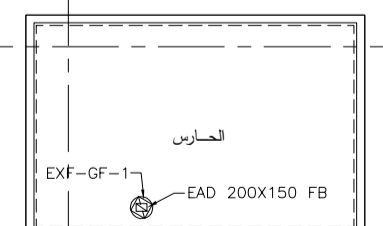


- 1-FOR LEGEND, GENERAL NOTES AND LIST OF MECHANICAL DRAWINGS REFER TO DRAWING No. BY1516-GNL-00.
- 2-FOR RISER DIAGRAM REFER TO DRAWING BY1516-GNL-02.
- 3-FOR MISCELLANEOUS DETAILS, REFER TO DRAWING No. BY1516-GNL-01.
- 4-FLUE PIPE DIAMETER SHOULD BE VERIFIED BY THE BOILERS SUPPLIER.



FAN	EXF-GF-1
TYPE	CENTRIFUGAL IN-LINE
QUANTITY	1
CFM	150
APPROXIMATE ST. PRESSURE (In. w.c.)	0.2
APPROXIMATE POWER CONSUMPTION (KW)	1/4
POWER RATING	220V/14/50Hz
FUNCTION	TOILET EXHAUST FAN IN SECURITY ROOM AT GROUND FLOOR
LOCATION	1ST FLOOR
REMARKS	1-EXTERNAL STATIC PRESSURE INCLUDES (WHERE PROVIDED) DUCT, AIR OUTLETS, FITTINGS AND SOUND ATTENUATORS PRESSURE DROP. 2-CONTRACTOR SHALL VERIFY STATIC PRESSURE AS PER APPROVED SHOP DRAWINGS.

FANS CAPACITY SCHEDULE



DESIGNED	W.H	DATE	APR 17
DRAWN	W.H	APP'D	SAH
CHECKED	Y.K	PROJECT NO.	BY151600
APPROVED	Y.K	FILE NAME	
SCALE	1/150	DATE	FEBRUARY 2016
DATE	FEBRUARY 2016	BY1516-HVAC-F01-REV-1	
APPROVED FOR CONSTRUCTION		SHEET NO.	

CONSULTANT
خطيب و علي
Khatib & Alami
CONSOLIDATED ENGINEERING COMPANY S.A.L.

PROJECT TITLE
CHHIM GOVERNMENTAL OFFICES BUILDING

DRAWING TITLE
**FIRST FLOOR PLAN
HVAC LAYOUT**

REVISIONS

NO.	DESCRIPTION	DATE