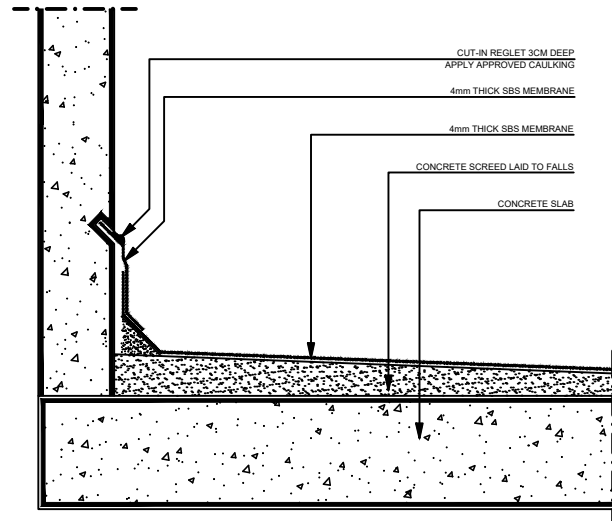
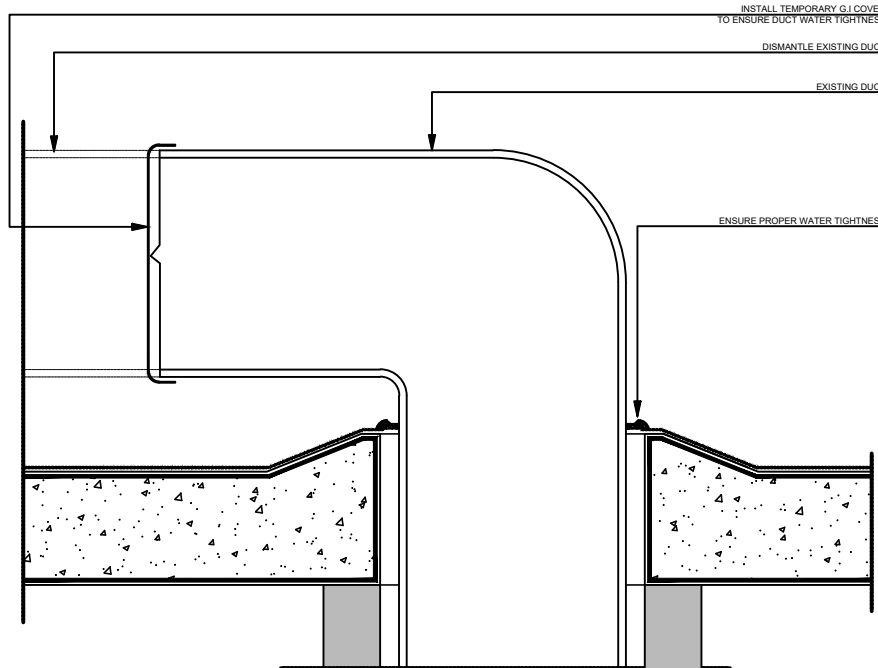


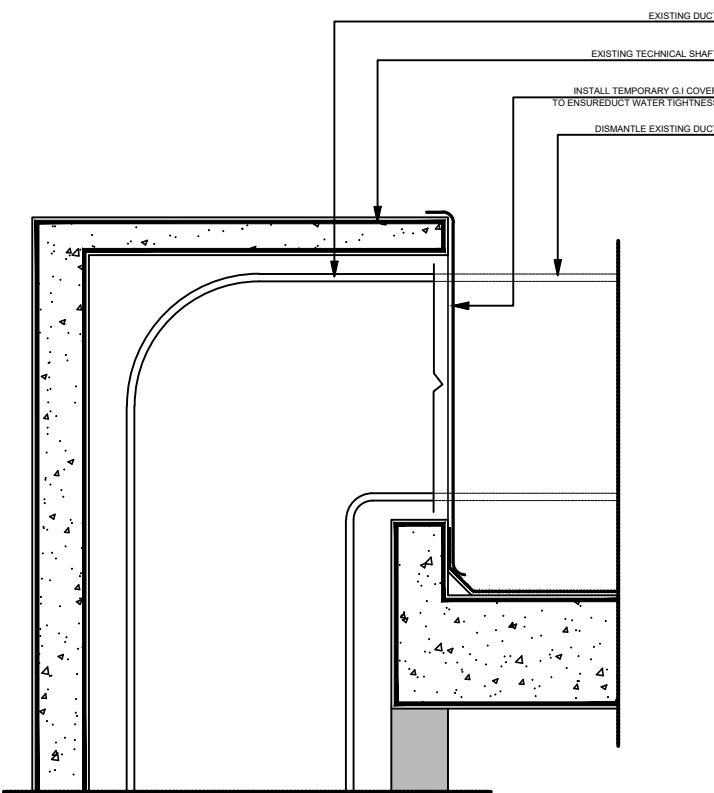
NOTE: drawings are indicative and should be read in conjunction with the Specifications and Bill of Quantities. The Contractor should visit the site and ascertain all field conditions and requirements prior to submitting an offer for the scope of work.



Waterproofing at Parapet

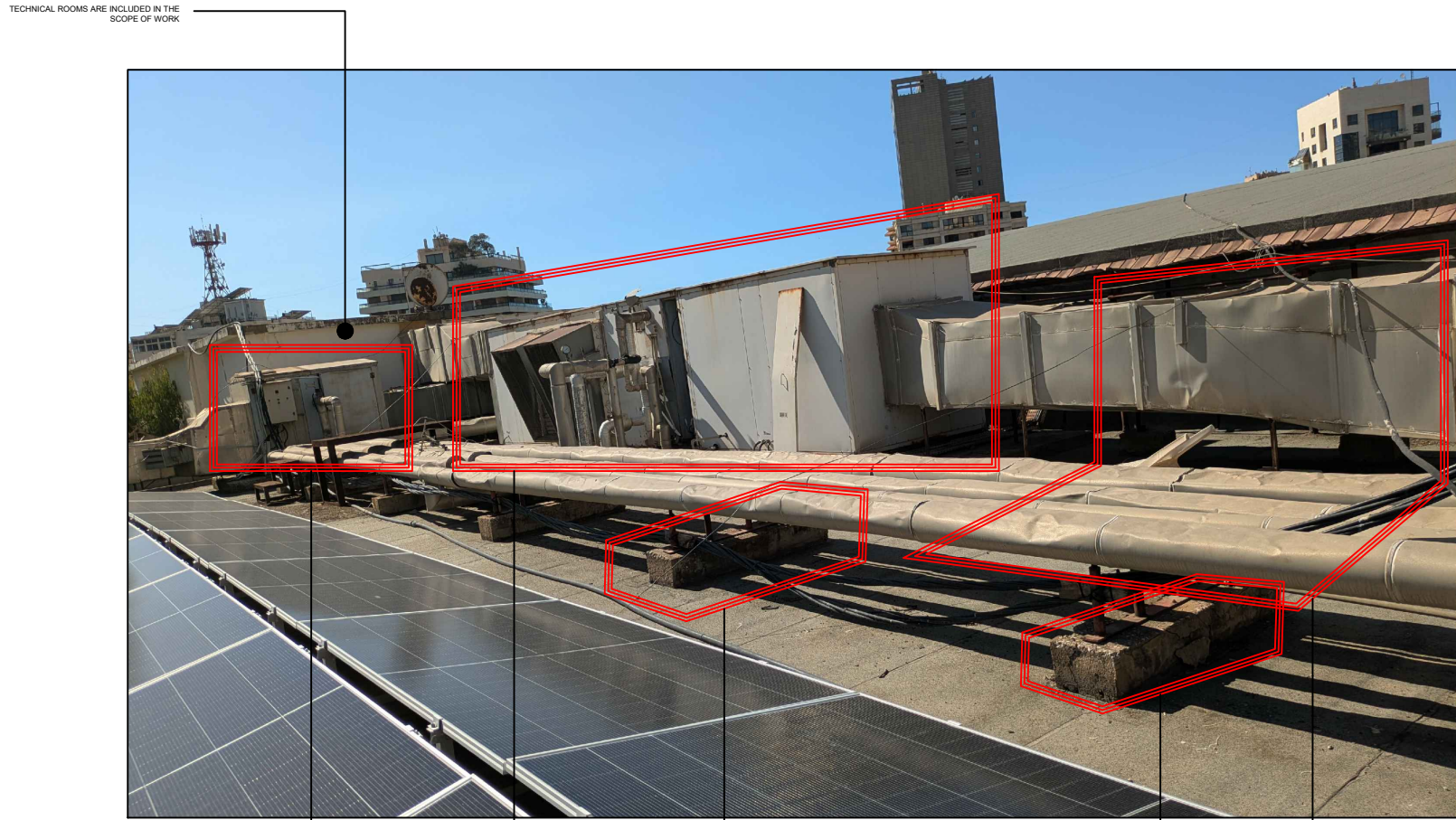


Duct Penetration in Slab



Duct Penetration in Shaft

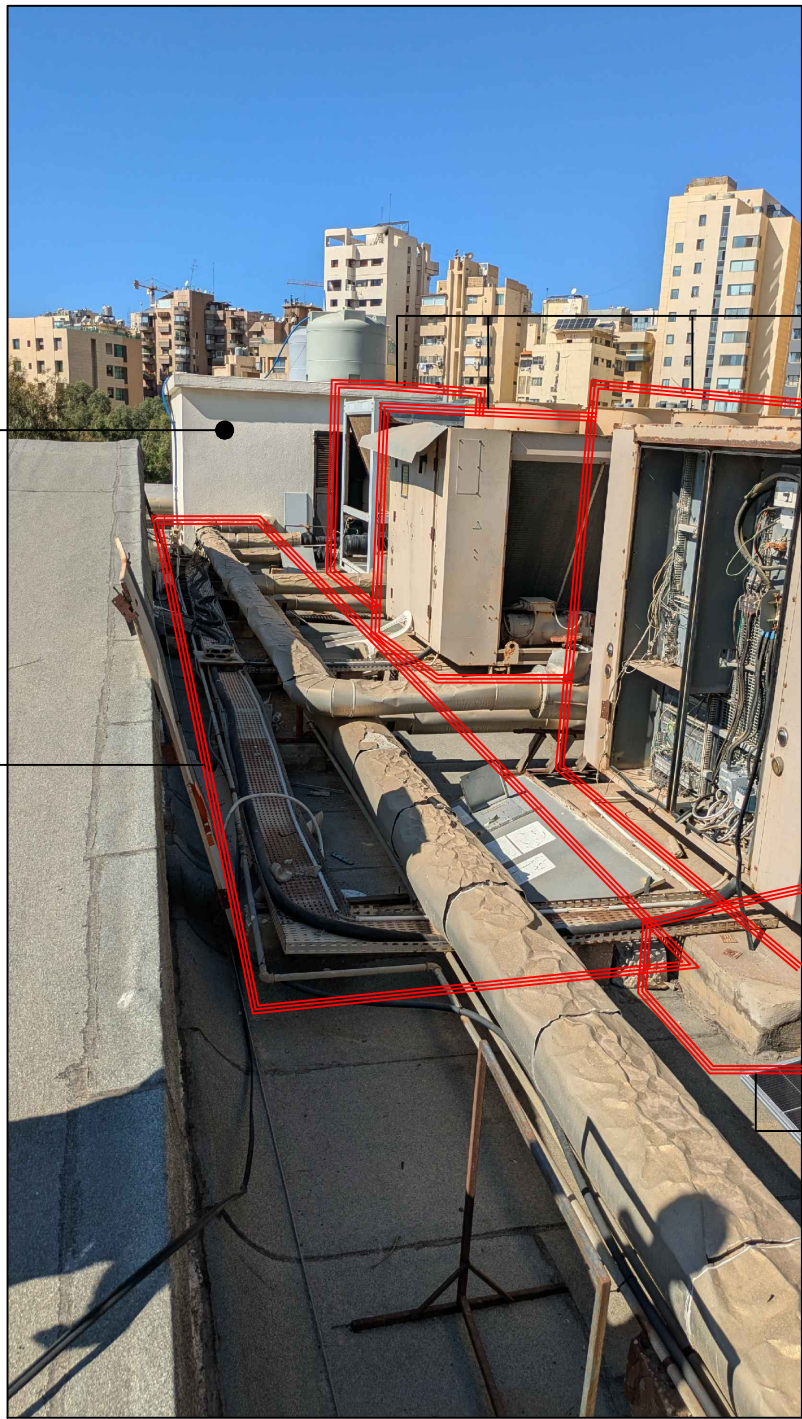
Scale: 1/20



SAFE DISCONNECTION, REMOVAL, LIFTING AND CARRY AWAY TO APPROVED DUMP SITE OF EXISTING EQUIPMENT AND MATERIALS INCLUDING ELECTRICAL PANELS, CABLES, TRAYS AND ALL ATTACHED ACCESSORIES AND TRIMS

DEMOLITION AND CARRY AWAY TO APPROVED DUMP SITE OF EXISTING EQUIPMENT AND SUPPORTS

SAFE DISCONNECTION, REMOVAL, LIFTING AND CARRY AWAY TO APPROVED DUMP SITE OF EXISTING EQUIPMENT AND MATERIALS INCLUDING ELECTRICAL PANELS, CABLES, TRAYS AND ALL ATTACHED ACCESSORIES AND TRIMS

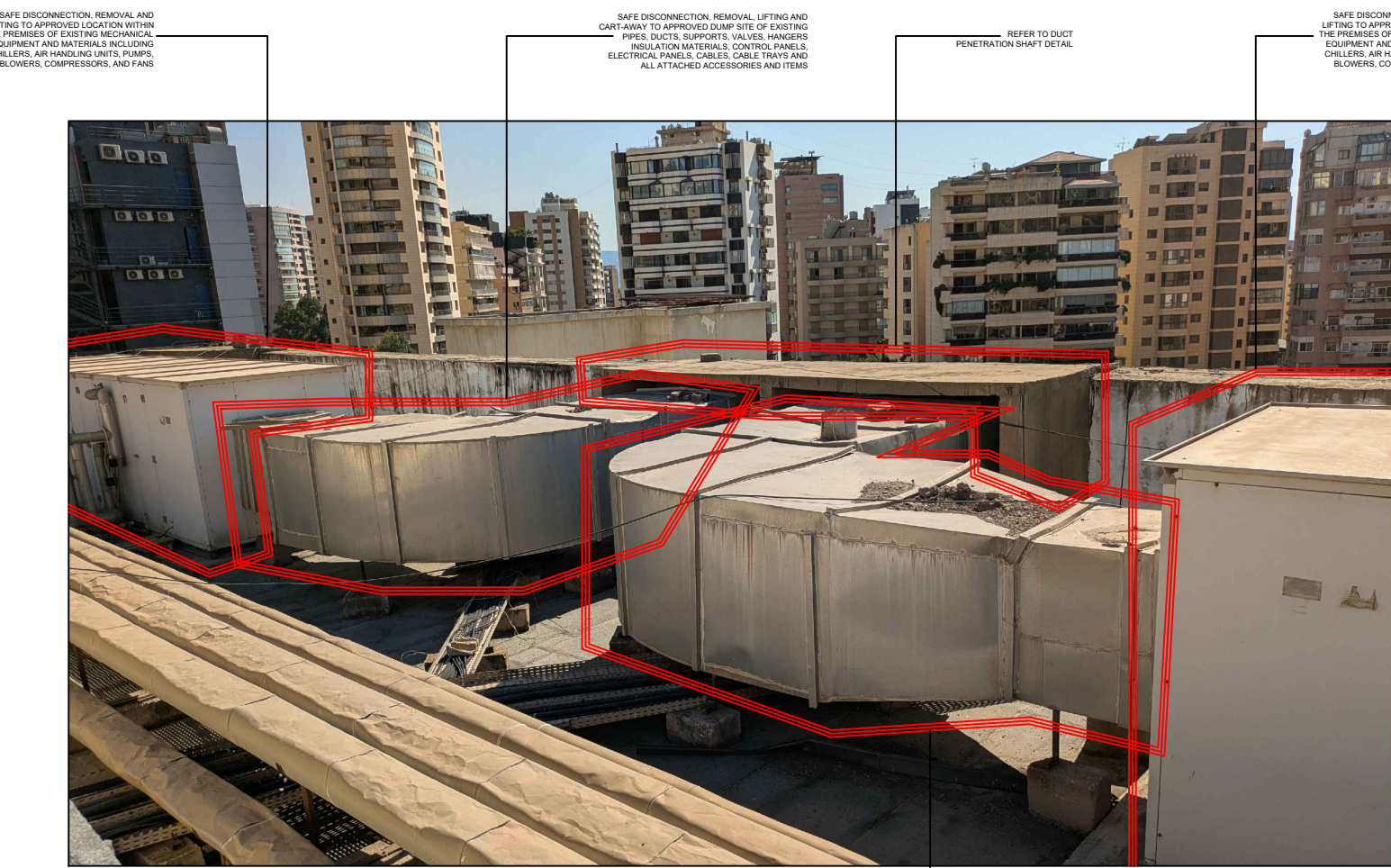


TECHNICAL ROOMS ARE INCLUDED IN THE SCOPE OF WORK

SAFE DISCONNECTION, REMOVAL, LIFTING AND CARRY AWAY TO APPROVED DUMP SITE OF EXISTING EQUIPMENT AND MATERIALS INCLUDING ELECTRICAL PANELS, CABLES, TRAYS AND ALL ATTACHED ACCESSORIES AND TRIMS

SAFE DISCONNECTION, REMOVAL, LIFTING AND CARRY AWAY TO APPROVED DUMP SITE OF EXISTING EQUIPMENT AND MATERIALS INCLUDING ELECTRICAL PANELS, CABLES, TRAYS AND ALL ATTACHED ACCESSORIES AND TRIMS

DEMOLITION AND CARRY AWAY TO APPROVED DUMP SITE OF EXISTING EQUIPMENT AND SUPPORTS



SAFE DISCONNECTION, REMOVAL, LIFTING AND CARRY AWAY TO APPROVED DUMP SITE OF EXISTING EQUIPMENT AND MATERIALS INCLUDING ELECTRICAL PANELS, CABLES, TRAYS AND ALL ATTACHED ACCESSORIES AND TRIMS

SAFE DISCONNECTION, REMOVAL, LIFTING AND CARRY AWAY TO APPROVED DUMP SITE OF EXISTING EQUIPMENT AND MATERIALS INCLUDING ELECTRICAL PANELS, CABLES, TRAYS AND ALL ATTACHED ACCESSORIES AND TRIMS

SAFE DISCONNECTION, REMOVAL, LIFTING AND CARRY AWAY TO APPROVED DUMP SITE OF EXISTING EQUIPMENT AND MATERIALS INCLUDING ELECTRICAL PANELS, CABLES, TRAYS AND ALL ATTACHED ACCESSORIES AND TRIMS

SAFE DISCONNECTION, REMOVAL, LIFTING AND CARRY AWAY TO APPROVED DUMP SITE OF EXISTING EQUIPMENT AND MATERIALS INCLUDING ELECTRICAL PANELS, CABLES, TRAYS AND ALL ATTACHED ACCESSORIES AND TRIMS

SAFE DISCONNECTION, REMOVAL, LIFTING AND CARRY AWAY TO APPROVED DUMP SITE OF EXISTING EQUIPMENT AND MATERIALS INCLUDING ELECTRICAL PANELS, CABLES, TRAYS AND ALL ATTACHED ACCESSORIES AND TRIMS

Note: The contractor should verify all dimensions and discuss with the architect all suggestions and remarks for the proper execution of the works. No modifications to execution drawings are allowed without the architect's written consent. All dimensions have to be checked on site, all errors and omissions to be reported to the architect. All rights reserved for Engineered Systems International S.A.R.L.

Project Name UNESCO Palace Roof Rehabilitation		Architecture Structural Eng. Mechanical Eng. Electrical Eng.		Project Mgmt. Technical Controller Security Eng. Geotechnical Eng.		Initial Issue: 15 October 2025 Revision 1: Revision 2: Revision 3: Revision 4: Revision 5:		Drawing Title Scope of Work Project Phase --- Drawn By: Verified By: Approved By:		Drawing Number A-001 Job Number: 25105 Scale: 1:200	
Owner Lebanese Ministry of Culture		Location Beirut - Lebanon									